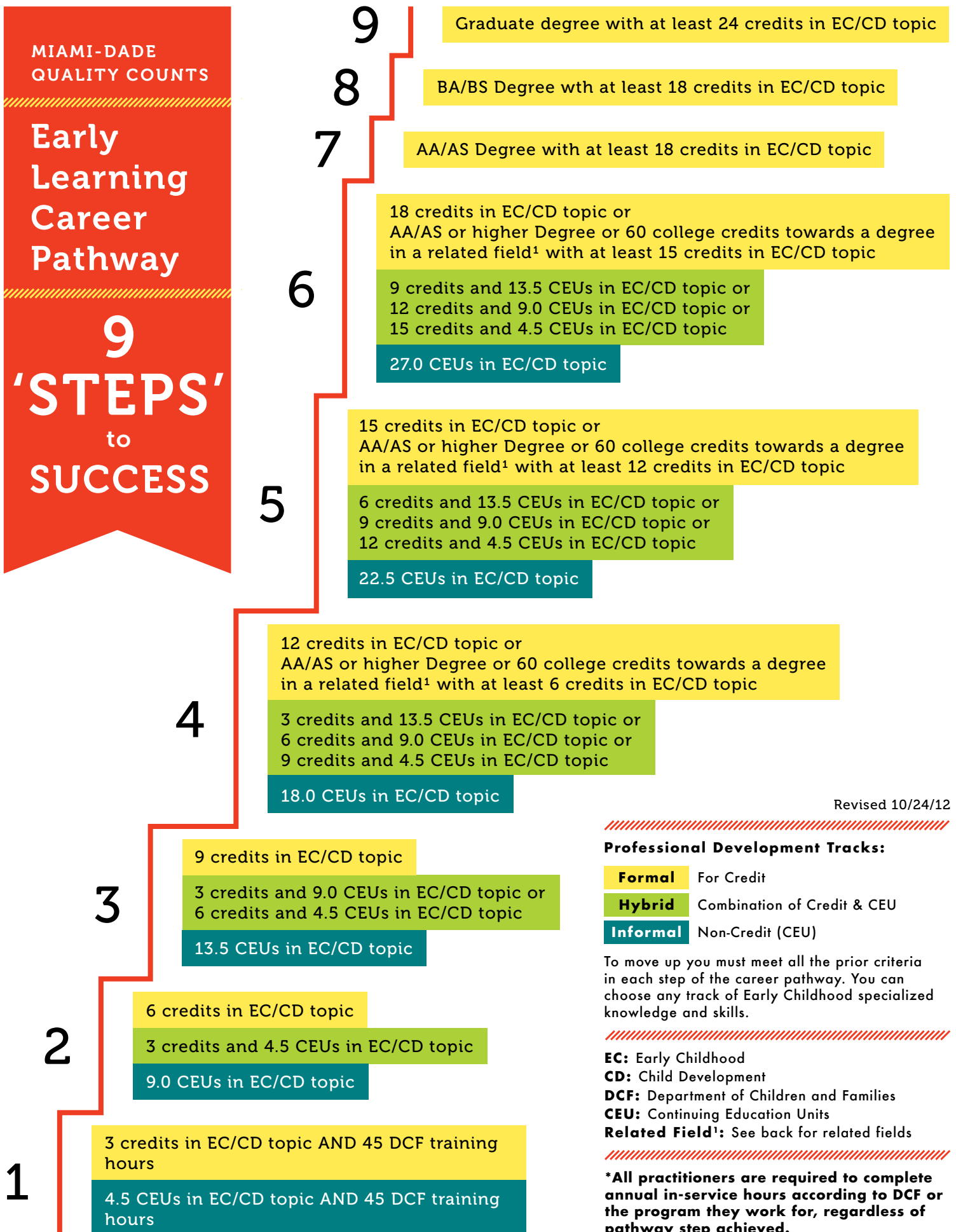


# Early Learning Career Pathway

## 9 'STEPS' to SUCCESS



Revised 10/24/12

### Professional Development Tracks:

- Formal** For Credit
- Hybrid** Combination of Credit & CEU
- Informal** Non-Credit (CEU)

To move up you must meet all the prior criteria in each step of the career pathway. You can choose any track of Early Childhood specialized knowledge and skills.

- EC:** Early Childhood
- CD:** Child Development
- DCF:** Department of Children and Families
- CEU:** Continuing Education Units
- Related Field<sup>1</sup>:** See back for related fields

**\*All practitioners are required to complete annual in-service hours according to DCF or the program they work for, regardless of pathway step achieved.**

## **RELATED FIELDS**



**AA/AS or higher Degree or 60 College Credits  
towards a degree in the following related fields:**



- Counselor Education
- Curriculum Instruction
- Education
- Educational Specialist
- Educational Leadership
- Elementary Education
- Emotional Disabilities
- Exceptional Student Education
- Hearing Impaired
- Mental Disabilities
- Mental Health
- Montessori Education
- Physically Impaired
- Psychology
- School Psychology
- Social Work
- Sociology
- Specific Learning Disabilities
- Speech-Language Pathology
- Varying Exceptionalities
- Visually Impaired